

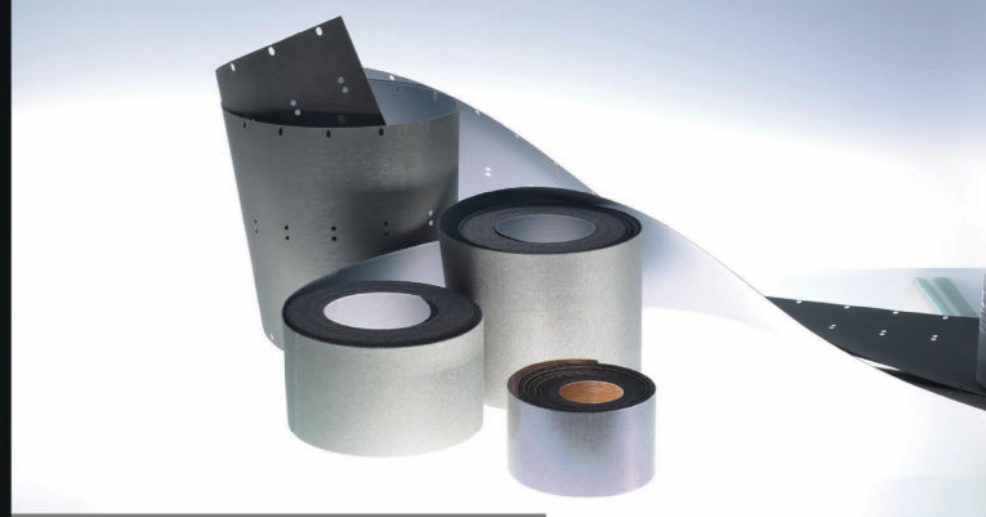
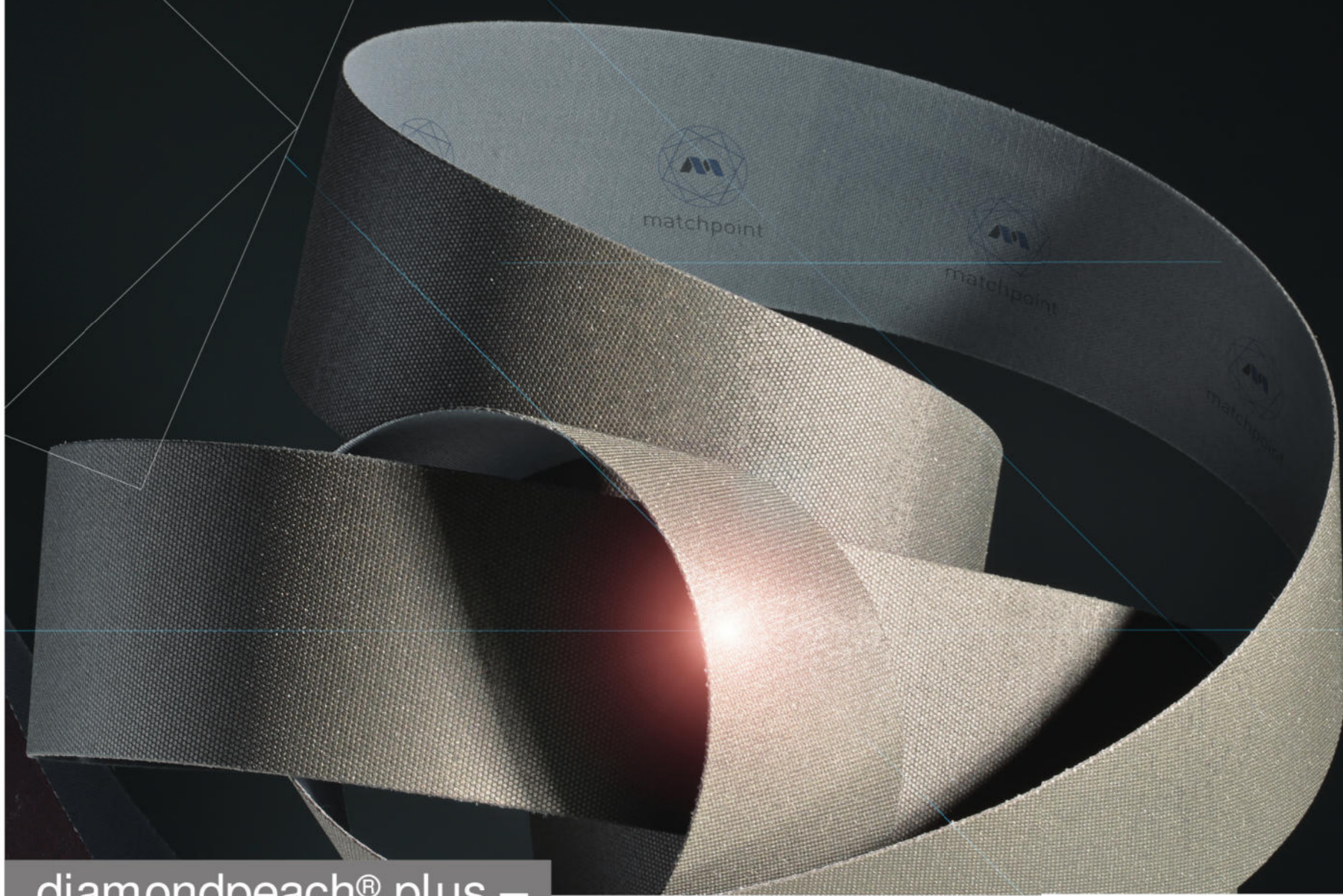


**matchpoint**  
diamond finishing technology

diamondpeach® plus

finishing technology for  
the highest requirements





## diamondpeach® plus – benefits at a glance



- JOINTFREE - technology
- Highest productivity
- Best consulting in textile surface finishing
- Perfect diamond dot stability
- Best pre-treatment
- Save economical & ecological resources
- Improved fabric strength
- 100% usage until the end of abrasive phase
- Increased machine efficiency
- Lower maintenance costs
- Constant high quality and reproducibility
- Easier handling of machines during production
- Upgrade existing + 2nd hand machines into state-of-the-art technology
- Lifetime when dry emersing, up to 4- 12 million metres of processed fabric
- Lifetime when wet emersing, up to 3- 5 million metres of processed fabric

## diamondpeach® plus –

## the jointfree sueding tool

## for maximum requirements

matchpoint has developed **diamondpeach®** specifically to treat textile fabrics in order to create the most attractive and most even sueding effects.

**diamondpeach®** is the perfect sueding tool. It combines outstanding finishing results and the highest of qualities along with economic and ecological aspects in a single piece of equipment.

**diamondpeach®** achieve more than 100 times the performance that is achieved using the traditional emery sand cycle. We have received positive feedback from our clients who are now obtaining increased fabric processing speeds, measured in metres per minute (m / min), and finding the machines easier to handle during the sueding process.

**Get the benefits of sueding with diamondpeach® plus!**

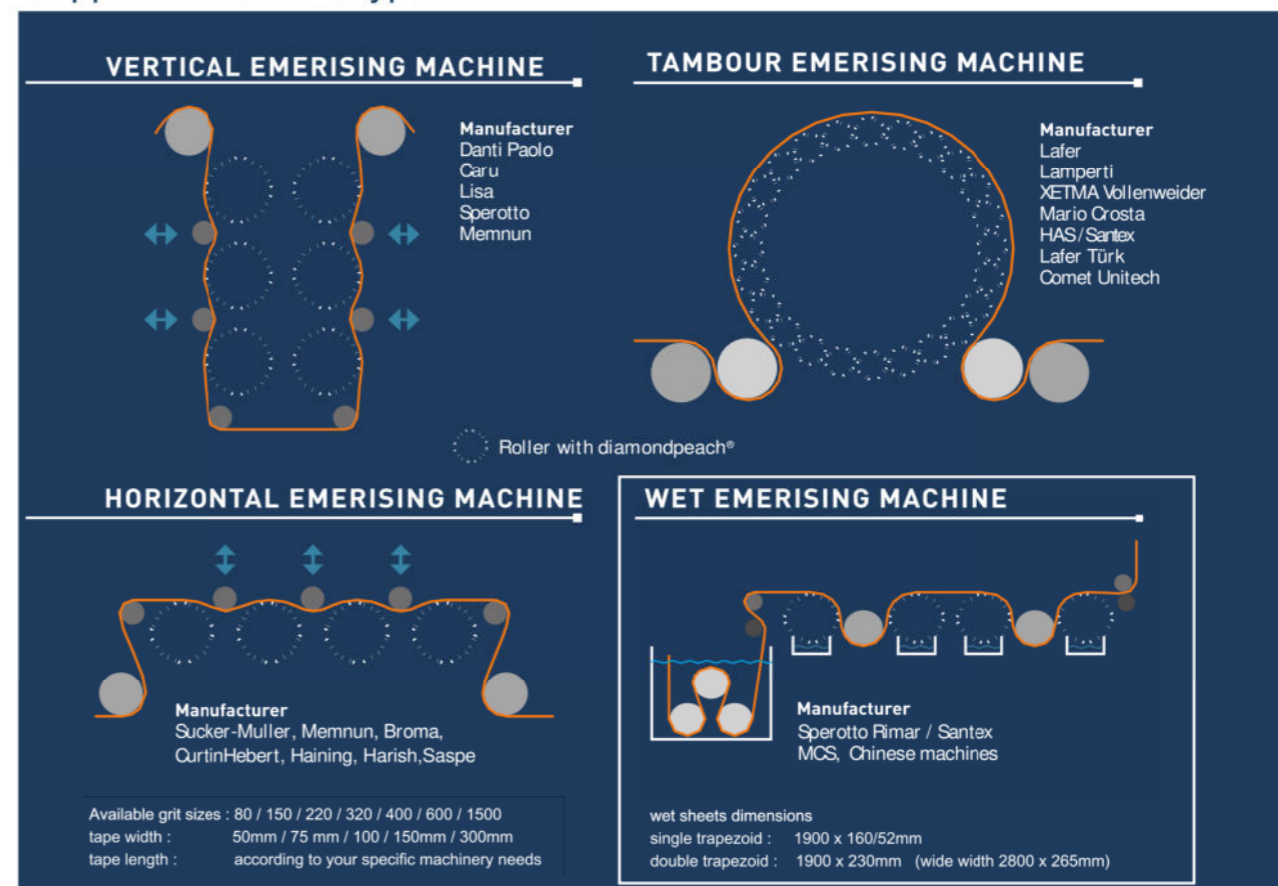
Alongside increased machine efficiency, the quality of the peaching process is also improved.

The perfect smooth sueding effects positively support the pre-treatment of grey fabrics and improve the quality of subsequent finishing processes.

**diamondpeach®** users have reported that complaints regarding 2nd grade quality have been reduced down to almost 0%, compared to conventional abrasive finishing technologies.

**For more information contact matchpoint.**

## Supported machine types



# matchpoint – sales worldwide

**Bangladesh**  
BTE - Bengal Technology and  
Engineering Associates  
197A (GF), Lane: 1, New DOHS  
Mohakhali, Dhaka - 1206  
Bangladesh

Contact: Md. Farhad Hossain  
Tel: +880-2-8872552  
Cell: +880-2-8872 716  
Email: info @ bte-bd.com  
Web: www.bte-bd.com

**China**  
M+F Tech Co. Ltd.  
伟诚国际有限公司 ( 上海 )  
Room 303, Nr. 570, Li Yuan Road,  
Suite LuWan District  
Shanghai 200023  
China

Contact: Mr. Jeffrey Sun  
Tel: +86-21-6305 9140  
Cell: +86-138 165 05291  
Email: egysun @ hotmail.com

**Italy**  
Danti Paolo srl  
Viale A. Labriola  
59013 Montemurlo PO  
Italia

Contact: Antonio Danti  
Tel: +39-0574-652 477  
Cell: +39-384-388 4131  
Email: info @ danti.it  
Web: www.danti.it

**India**  
A.T.E. Enterprises Private Limited  
A-19 CTS 689,  
Veera Desai Road  
Andheri (West)  
Mumbai - 400 053  
India

Tel: +92-22-6676 6100  
Email: processing @ ateindia.com  
Web: www.ategroup.com

**Indonesia**  
Dharmatek Berkas Utama  
Bukit Cimanggu City,  
Blok G3 No. 6, 16166 Bogor  
Indonesia

Contact: Mr. Dharmendra / DP Singh  
Tel: +62-251-736 757  
Cell: +62-858-1190 9509  
Fax: +62-251-736 744  
Email: deepsingh101015 @ gmail.com  
Web: www.dharmatek.co.id

**Pakistan**  
KASH International (Pvt.) Ltd  
138 Faran Cooperative Housing  
Society, Haider Ali Road  
Karachi - 74800  
Pakistan

Contact: Mr. Razi Shamsi  
Tel: +92-21-494 8904  
Cell: +92-300-8256502  
Email: kashintl @ cyber.net.pk

**Matchpoint - South America**  
Thomas Scheurenberg  
Av. Lima Polo 241, dep.701  
Surco - Lima  
Peru

Contact: Mr. Thomas Scheurenberg  
Cell: +51-940-189 923  
Cell: +49-160-9190 3624 (Ger)  
Email: thomas.scheurenberg @ gm.x.de

**Turkey**  
Pro Teknik Ltd.  
Korfez Mah. Liman Cad. No:84  
41030 Basikele Kocaeli  
Turkiye

Contact: Mr. Cuneyt Isman  
Tel: +90-533-967 2066  
Cell: +90-262-343 3090  
Email: c.isman @ ptservice.com.tr  
Web: www.ptservice.com.tr

**Vietnam**  
TAV - Thach Anh Vang  
161/32 Thach Lam St, Tan Phu Distr  
Distr. 3 / Ho Chi Minh City  
Vietnam

Contact: Mr. Binh  
Tel: +84-8-3864 8873  
Cell: +84-90-9872 788  
Email: binh.pham @ thachanhvang.com  
Web: www.thachanhvang.com

**Have a look at our webpage if the agent of your country is not listed!**



**matchpoint**  
diamond finishing technology



**matchpoint - Europe - Head Office**  
**matchpoint Textilmaschinenbau GmbH**  
Am Kaempchen 7  
41061 Moenchengladbach  
Germany  
Fon 0049-2161-299 1959  
Fax 0049-2161-299 1953  
Cell 0049-170-5930326  
info@matchpoint-textile.com  
www.matchpoint-textile.com

