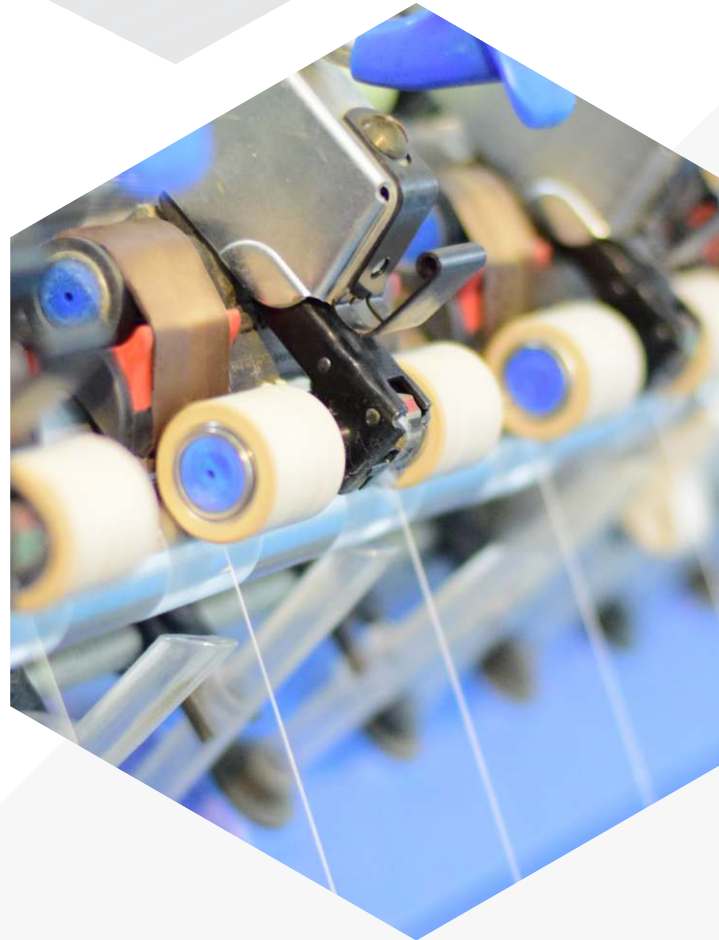
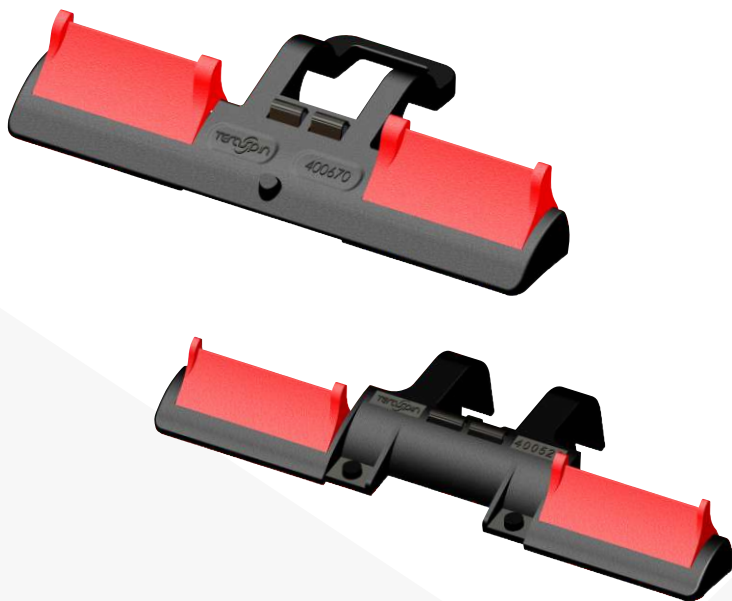


Smart cradles

A proven way to improve yarn quality



Cradles discharge the important function of keeping the apron in position over the rotating top roller so that fibres are effectively guided in the main draft zone. TeraSpin's new range of Smart cradles exercise better control over fibres in the front zone and hence give better roving and yarn quality.

Ring frame cradles

OH S 168	Short polymer cradle, 70 mm gauge
OH S 175	Short polymer cradle, 75 mm gauge

Roving frame cradles

OH P 110	Short polymer cradle
OH P 310	Medium polymer cradle

Features

- Reduced contact area minimises friction during apron rotation
- The only Smart Cradle that ensures a fixed radius and hence a uniform distance between apron nip and front roller nip
- Accommodates variations in apron length & maintains uniform apron tension

Benefits

- Reduced yarn imperfections
- Longer apron working life
- Easy apron removal and mounting during maintenance

Manufactured by:



A.T.E. ENTERPRISES PRIVATE LIMITED

(Business Unit: TeraSpin)
T: +91-2717-699061 E: sales@teraspin.com
W: www.ategroup.com/teraspin

Marketed and sold by:



A.T.E. ENTERPRISES PRIVATE LIMITED

T: +91-22-6676 6100 E: poacc@ategroup.com
W: www.ategroup.com

