



CARD-MONROE CORP.
CREATING POSSIBILITIES...

INDEX

ABOUT US

- Introduction 4
- Mission and Value Statement 5
- A Brief History 6
- Our Timeline 7
- Sales 8

PRODUCT INNOVATIONS

- Infinity..... 11
- Tailored Loop..... 12
- ColorPoint 14

OUR MARKETS

- Hospitality 17
- Commercial/Contract 18
- Residential 19
- Turf 20
- Rug 21
- Automotive 22

SUPPORT AND CUSTOMER CARE

- CMC Support 24
- CMC Service 26
- Tufting University 28
- Creative Tufting Center 32



ABOUT US

Card-Monroe Corp., headquartered in Chattanooga, Tennessee, USA, is the premier manufacturer of tufting machines for carpet, rug, and artificial turf producers throughout the world. Today with nearly 90% of carpet produced by tufting, CMC's focus on tufting and dedication to making our customers more successful has made us the preferred provider of tufting machines across the globe. Every machine we build is customized to match the unique requirements of each customer. Card-Monroe was founded in 1981, but our tufting heritage dates back decades earlier. With millions of dollars annually dedicated to advancing the state of the art, CMC has become the *World Leader in Tufting Technology*





OUR MISSION

By developing and nurturing partnerships we seek to bring industry-leading tufting technology to the world... all to the Glory of God.

OUR VALUE STATEMENT

CMC's values drive the decisions we make and govern our relationships. Our core values are: Honesty & Integrity; Love, Dignity, & Respect; and Having a Servant's Heart. We hold each other accountable to these values and seek to instill them throughout the organization.

CREATING POSSIBILITIES

It's what we do at CMC. Every day we dedicate ourselves to creating technologies that make our customers more efficient and cost effective - technologies that inspire creativity and add to their success. We're driven to redefine limitations, to ensure that what was impossible yesterday is possible today, and to transform customer visions and desires into realities.

OUR HERITAGE

To know us is to know the pride we have in our heritage. Although CMC was founded in 1981, our history doesn't start there. Our beginnings date back to the 1930's, when the Cobble brothers began manufacturing tufting equipment for chenille bedspreads. Two of our leaders, Roy Card and the late Lewis Card Sr., nephews of the Cobble's, got their start in the 1940's with Cobble.

These pioneers have been shaping the history of the tufting industry with their technological innovations for more than half a century. Their innovative spirit has forevermore changed the way carpet is made.

Currently, CMC has over 2,300 state-of-the-art tufting machines in operation across 35 countries. The majority of our business relationships are long-standing and we pride ourselves on the strength of those ties. We believe that our emphasis on innovation, service, and integrity is the binding force that has kept those relationships thriving.

• TIMELINE •

1981	<i>Charles Monroe Company (CMC) was founded by Charles Monroe and Lewis Card, Jr.</i>	1987	<i>By 1987, CMC had sold its 300th tufting machine, only 5 years after it had sold its very first one.</i>	2002	<i>The revolutionary Infinity² attachment by CMC was introduced in 2002.</i>
1982	<i>June 7, 1982 became a milestone date for CMC, marking the completion of the first new CMC machine.</i>	1989	<i>Command Performance was introduced by CMC to automate the tufting machine in 1989.</i>	2009	<i>The first ColorPoint¹ Machine was sold by CMC in 2009.</i>
1983	<i>The company's name changed from Charles Monroe Company to Card-Monroe Corp. when Lewis and Roy Card invested in it in 1983.</i>	1995	<i>Servo Scroll introduced by CMC.</i>	2015	<i>A new R&D facility was added to CMC's main location in Hixson, TN.</i>
1985	<i>The SuperSpeed Machine was introduced by CMC.</i>	2000	<i>CMC underwent major expansion to the corporate campus building in Hixson, TN.</i>	2018	<i>Tailored Loop³ was introduced by CMC. Tufting University receives state-of-the-art classroom renovations.</i>

1: Covered by U.S. Pat. Nos. 8,141,505; 8,359,989; & 8,776,703; 9,399,832 & 9,410,276, 10,081,897; Japanese Patent Nos. JP 5389467; JP 5622876; JP 5745724; European Pat. Nos. EP 2 100 994 (6 countries) & EP 2 321 454 (3 countries); Turkish Patent No. TR 2011 06842 T4; German Patent No. DE 60 2009 001 409 9; Chinese Pat. Nos. ZL 2009 10130717.7; ZL 2009 80134191.8 & ZL 2012 10371253.0; & Other U.S. & Foreign Patents Pending **2:** Covered by U.S. Patents 6,283,053; 6,807,917; 7,096,806; EP 2 220 278, 7,905,187 & by other U.S. and foreign patent(s) pending **3:** Tailored Loop Patent(s) Pending



SALES

Integrity... it's in our values, and a part of our essence, our heritage. We believe it is the definitive aspect of every successful customer relationship.

At CMC, we start by listening; seeking to understand your unique needs and desires. Then we create the right solution to deliver the success you expect. Our team interacts at multiple levels within your company, drawing on the appropriate techniques and technologies to help you reach your goals. We see each customer as a partner, and we're honored that they treat us the same way.



PRODUCT INNOVATIONS

Our new product development initiatives are directed by you - the voice of the customer.

In a recent industry survey, you said that you look to CMC for solutions to the challenges you face in your mills and in your markets. You said that you count on CMC for *Creating Possibilities*, new styling capabilities, greater production efficiencies, consistent quality, and predictable production. These are the objectives of our Research & Development. From something as fundamental as the rolls on an Infinity motor, or as game changing as our patented ColorPoint machine, CMC leads the way in tufting technology. Take a look at these advancements we have made to our products...

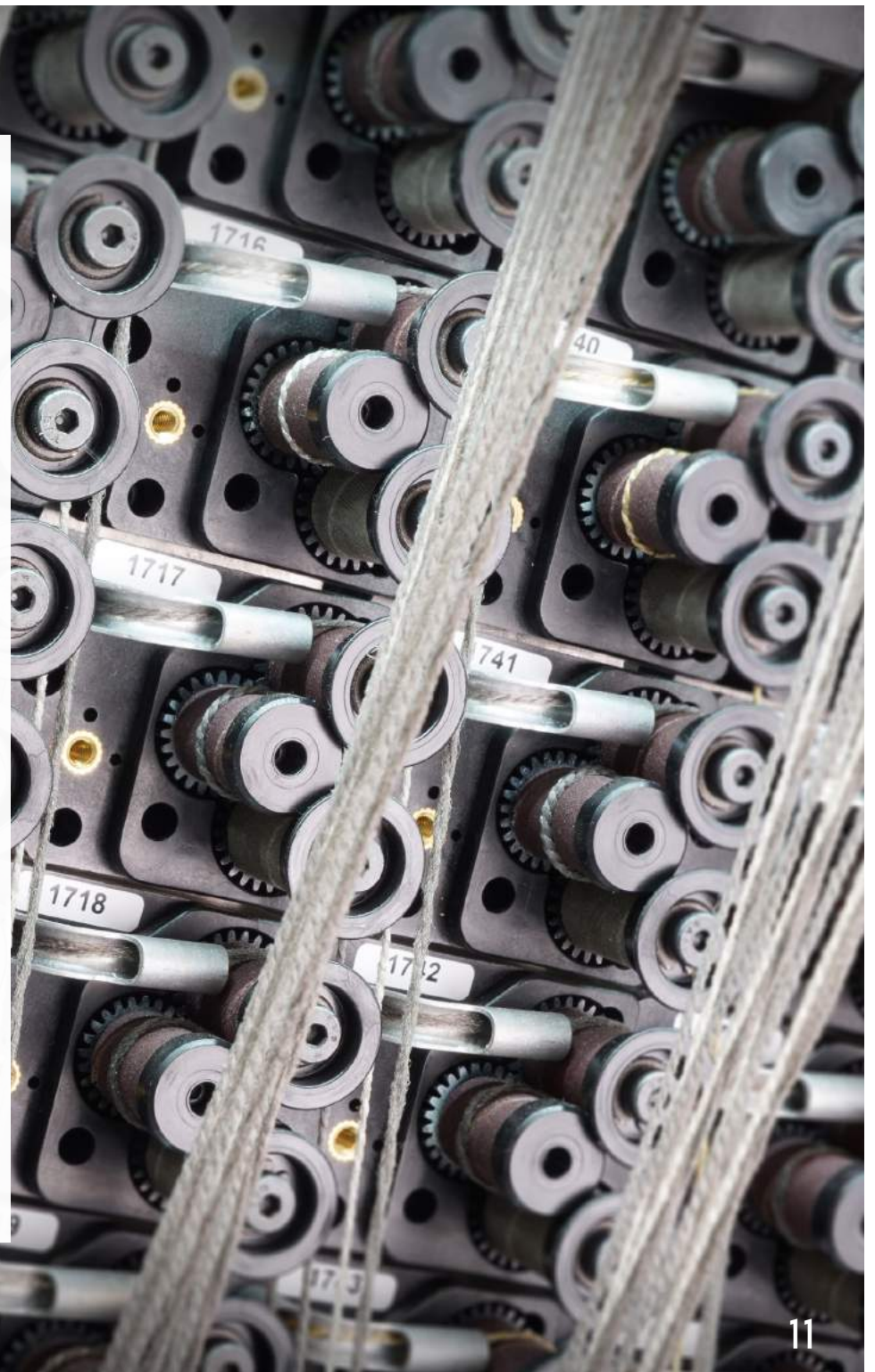
INFINITY ATTACHMENT

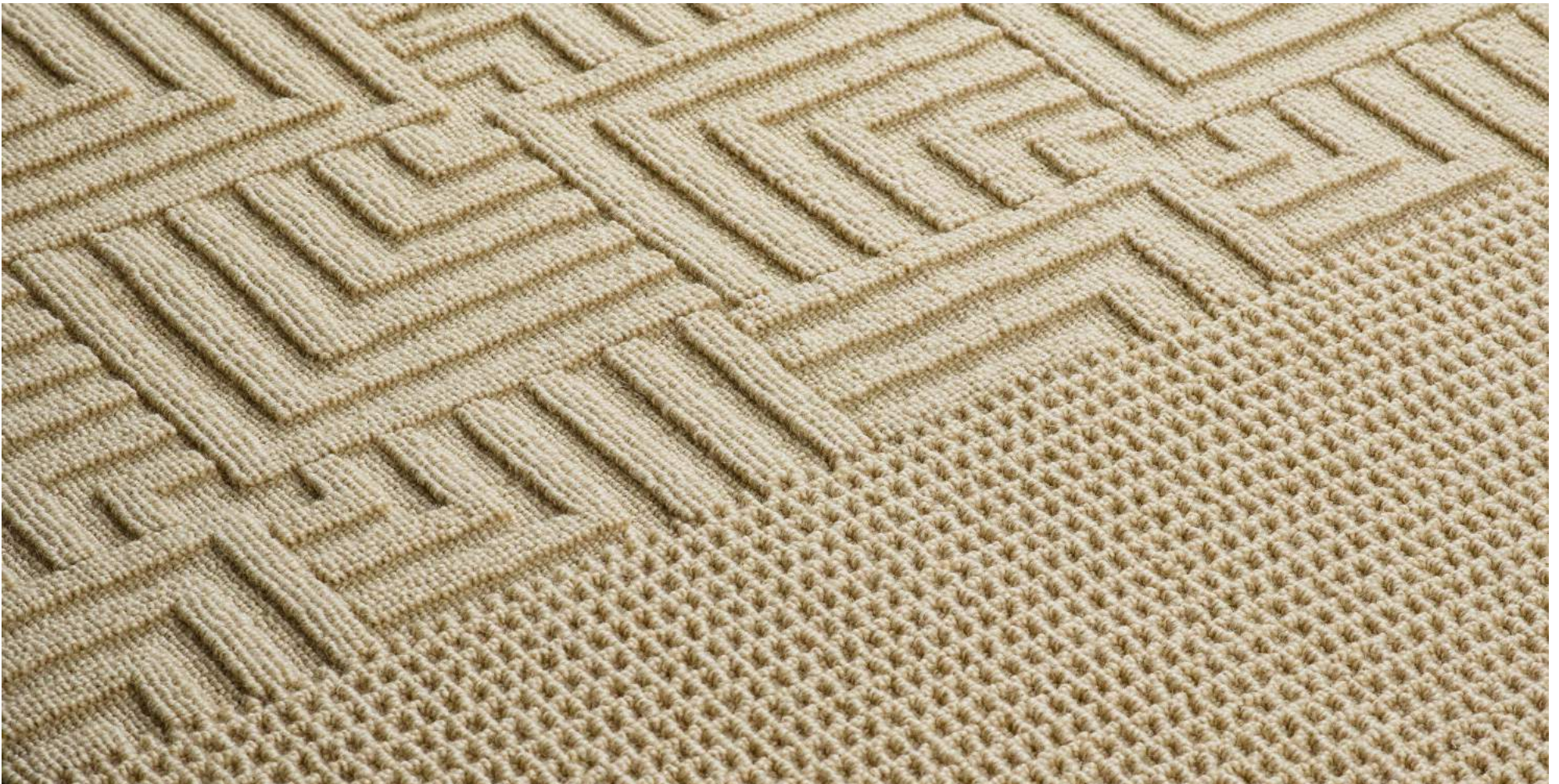
From its inception, the Infinity² pattern attachment has created a new era in tufting technology. With Infinity, your designers are able to create free-flowing patterns, textures, and shading effects with any number or size of repeats. You gain the flexibility to produce whatever carpet styles your customers want.

CMC's new **Infinity Integrated Motor and Drive (IMD) unit**⁴ is stronger, faster, and even more precise than its predecessor. This patent pending new technology allows for quicker yarn response resulting in higher pattern clarity. This pattern clarity comes at no cost to its overall efficiency as the new Infinity IMD has even higher targeted production speeds.

- **PRECISION** - Single-end Infinity does not use a tube bank but feeds each yarn directly to the needle. This exact yarn response between attachment and needle bar allows you to control each stitch and stay true to the pattern.
- **SPEED** - With increased torque and operating speeds up to 1,500 RPM/Shifting & 1,800 RPM/Non-Shifting, Infinity IMD gives you true single-end control while increasing speed, accuracy, and efficiency.
- **EASE OF THREADING** - Infinity IMD's new 3-roll yarn delivery system⁵ with ceramic guides makes threading easier than ever.
- **RELIABILITY** - Less than 3 servomotor failures per million operating hours.

2: Covered by U.S. Patents 6,283,053; 6,807,917; 7,096,806; EP 2 220 278, 7,905,187 & by other U.S. and foreign patent(s) pending 4: Covered by U.S. Patent No. 8,201,509 5: Covered by U.S. Patent 10,072,368





TAILORED LOOP

CMC's Research & Development team has produced the machine that will change the landscape of the tufting industry. True single loop control is now possible through technology that has created all new, revolutionary loop structures... **Tailored Loop.**

AN ALL NEW TUFTING TECHNOLOGY

The Tailored Loop Machine has unlocked new design possibilities for every soft-surface floor covering application. This is only the beginning as designers continue to discover new ways they can apply this machine's immense capability across markets.

Because of Tailored Loop's ILC (Individual Looper Control) Technology³, perfect command of each individual stitch is now possible for the first time in the history of tufting.

With it's capability to also utilize our patented Infinity² and ColorPoint¹ technology, Tailored Loop provides designers with limitless creative possibilities through it's unprecedented loop control.



KEY FEATURES

- Revolutionary new loop structure
- Precise single-loop control
- One stitch textures
- Flexible & versatile pattern capability
- Commercial/Contract, Hospitality, High-end Residential, & Rug applications
- Perfect control of each individual stitch allowing for superior high pile accuracy when tip-shearing
- No transitional stitches
- Enables perfect control of lower level pile height when upper level pile height is present
- Doesn't torque or distort yarn
- Unique textural effects
- Ability to tuft all types of yarns including wool
- Can be combined with our revolutionary ColorPoint¹ technology

¹: Covered by U.S. Pat. Nos. 8,141,505; 8,359,989; & 8,776,703; 9,399,832 & 9,410,276, 10,081,897; Japanese Patent Nos. JP 5389467; JP 5622876; JP 5745724; European Pat. Nos. EP 2 100 994 (6 countries) & EP 2 321 454 (3 countries); Turkish Patent No. TR 2011 06842 T4; German Patent No. DE 60 2009 001 409 9; Chinese Pat. Nos. ZL 2009 10130717.7; ZL 2009 80134191.8 & ZL 2012 10371253.0; & Other U.S. & Foreign Patents Pending ²: Covered by U.S. Patents 6,283,053; 6,807,917; 7,096,806; EP 2 220 278, 7,905,187 & by other U.S. and foreign patent(s) pending ³: Tailored Loop Patent(s) Pending



COLORPOINT™ MACHINE

CMC's patented ColorPoint™¹ tufting machine produces carpet that is more desirable and sophisticated - but with the style and agility of a tufting machine. Since there is no buried yarn in the face of the carpet you get 100% full-gauge coverage. This means you can produce lower weight, better-performing product constructions, with vivid colors, pinpoint stitch accuracy, unmatched detail, and enhanced product durability.

PROVEN PERFORMANCE AND RELIABILITY

With over 90 ColorPoint™¹ tufting machines now operating, the dependability of this unprecedented technology is proving itself every day. The precision required by the ColorPoint™¹ tufting method relies on CMC's Infinity Yarn Control™² pattern attachment and the SmartStep™ needle bar shifter, both of which have hundreds of thousands of carpet-producing hours. This unique combination of existing and new technology brings you capability previously only imagined.

A DESIGNER'S DREAM

ColorPoint™¹ gives you the freedom to design what you dream. Creating styles, looks, and patterns on ColorPoint™¹ machines is extremely easy and functional. Develop your patterns and textural effects using your existing carpet design software. ColorPoint™¹ can create virtually whatever you imagine in up to six colors or more. To perform this magic, ColorPoint™¹ uses our Command Performance G2 software, so getting your design from concept to carpet is easier than ever.



LIKE NO OTHER

- Pattern capability previously only available from a loom
- 100% full gauge coverage with no buried ends
- Precise single penetration color placement
- Remarkable ease of design
- Unlimited variety of scale
- Non-directional looks for carpet tile or broadloom
- Produce unlimited patterns within the same color combinations
- Immediately alternate pattern colors without changing the creel

TWO-COLOR COLORPOINT™

Two-Color ColorPoint™¹ is designed to tuft just two colors. This distinct approach is perfect for creating subtle styles that match consumer tastes. With no buried ends you get true machine gauge density. In addition, you can create a tweed look by combining the two colors into a single stitch location. If you are in search of new looks for the residential or hospitality market, the Two-Color ColorPoint™¹ may be the solution you and your customers are seeking.

COLORPOINT™ LOOP OR CUT & LOOP

With CMC's ColorPoint™¹, you can manufacture all cut-pile multi-color products or you can produce patterns with varying amounts of cut and loop. This patented technology allows for multiple single-color concentration areas with 100% coverage. Using six different colors or more, you can tuft unprecedented loop pile construction and incredible multi-color patterns, including multiple pile heights in the loop-pile portion of the pattern.

¹: Covered by U.S. Pat. Nos. 8,141,505; 8,359,989; & 8,776,703; 9,399,832 & 9,410,276, 10,081,897; Japanese Patent Nos. JP 5389467; JP 5622876; JP 5745724; European Pat. Nos. EP 2 100 994 (6 countries) & EP 2 321 454 (3 countries); Turkish Patent No. TR 2011 06842 T4; German Patent No. DE 60 2009 001 409 9; Chinese Pat. Nos. ZL 2009 10130717.7; ZL 2009 80134191.8 & ZL 2012 10371253.0; & Other U.S. & Foreign Patents Pending ²: Covered by U.S. Patents 6,283,053; 6,807,917; 7,096,806; EP 2 220 278, 7,905,187 & by other U.S. and foreign patent(s) pending

OUR MARKETS

A Customer for life is the aim for each relationship we are privileged to make. Our customers include the leading carpet, rug, and artificial turf producers throughout the world. While many of our customers are located within 100 miles of our headquarters in Chattanooga, we now have over 2,300 machines operating in 35 countries across the globe.

To ensure the best understandings and technical support, CMC sells and interacts directly with our customers. Regardless of location, our goal is to treat each customer as if they are right next door.

Wherever carpet, rugs or artificial turf is being tufted, you will find our machines. If you are into tufting, you know CMC.



HOSPITALITY MARKET

Distinctive styles and discerning taste are the hallmark of this market segment and Card-Monroe's tufting machine innovations answer this call. Some in this market even ask our customers for CMC branded products by name. When producing carpet for hotels, senior living, restaurants, or convention centers, rely on CMC to help you meet your customer expectations.



CONTRACT AND COMMERCIAL MARKET

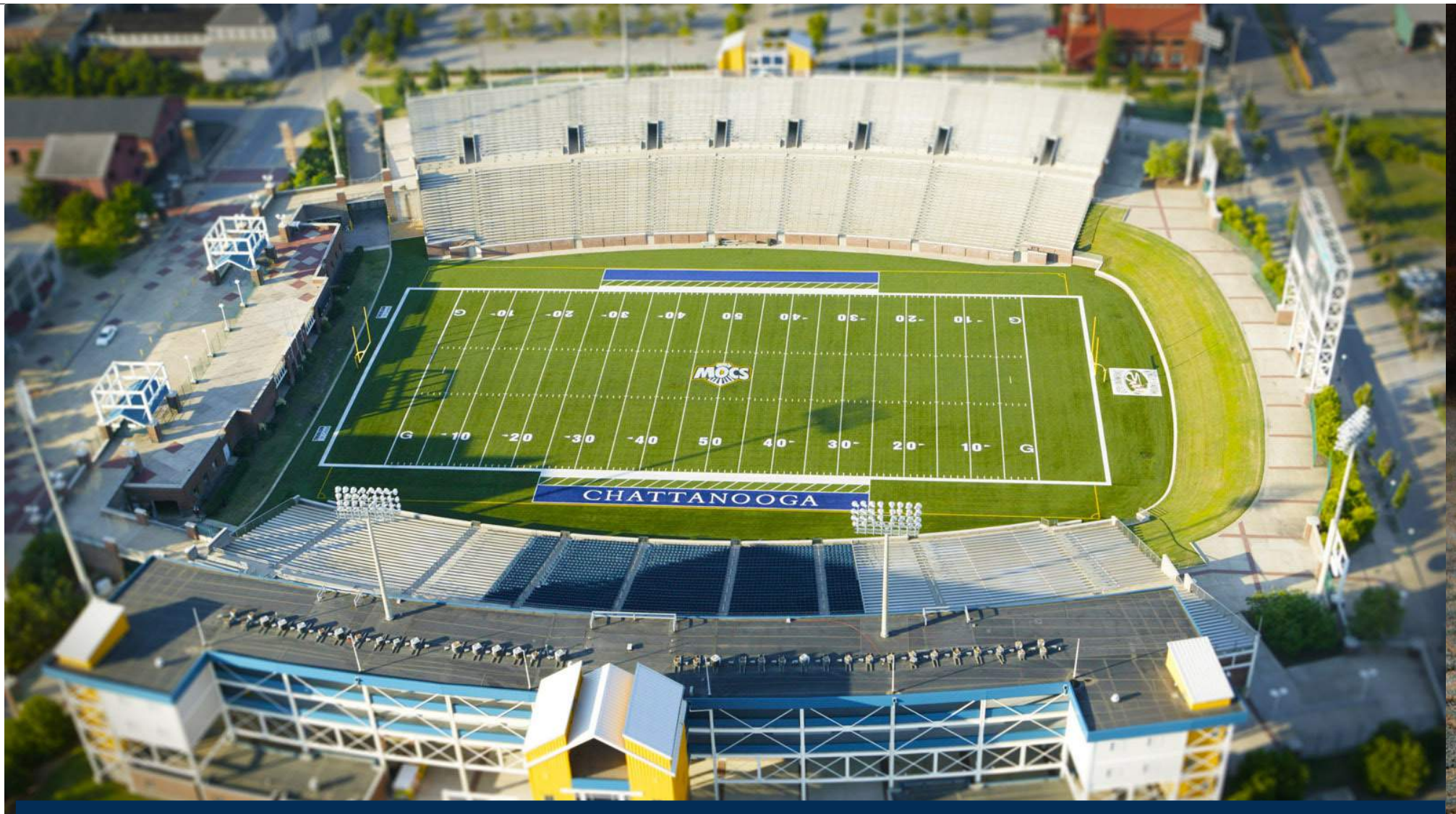
Styles are more important than ever in this market. From carpet tiles to patterned broadloom carpet, CMC tufting machines satisfy the demand for innovative styling in today's contract carpet market. Utilizing CMC's patented ColorPoint™¹ machines, our customers are creating great looking work spaces in offices and commercial buildings across the globe.

¹: Covered by U.S. Pat. Nos. 8,141,505; 8,359,989; & 8,776,703; 9,399,832 & 9,410,276; 10,081,897; Japanese Patent Nos. JP 5389467; JP 5622876; JP 5745724; European Pat. Nos. EP 2 100 994 (6 countries) & EP 2 321 454 (3 countries); Turkish Patent No. TR 2011 06842 T4; German Patent No. DE 60 2009 001 409 9; Chinese Pat. Nos. ZL 2009 10130717.7; ZL 2009 80134191.8 & ZL 2012 10371253.0; & Other U.S. & Foreign Patents Pending



RESIDENTIAL MARKET

Whether your aim is high-end residential or multi-family apartments, keep your costs down with unmatched speeds and performance of CMC tufting machines. Combine a vast array of texture and color options with different pile heights to create bold new carpet looks. CMC tufting machines can achieve Cut-Loop, High-Low Loop, and many other types of carpet desired by the residential market. And this market is just beginning to experience the transformation created by the look and style of ColorPoint™.



TURF MARKET

CMC is the world leader in the manufacturing of tufting machines for synthetic sport or landscape turf. Our turf machines reach speeds unrivaled in the industry. While other machines operate in the range of 200-300 RPMs, CMC's advanced turf machines give you the ability to operate at 600 RPMs - even while tufting turf pile heights. This is as much as twice the speed of other equipment, and that alone can double your productivity.



RUG MARKET

Distinct styling is the hallmark of rugs, and with CMC's ColorPoint™¹ technology and Infinity Yarn Control™² your rug patterns are limited only to your imagination. The Infinity attachment provides complete control at each needle, creating endless design freedom.

1: Covered by U.S. Pat. Nos. 8,141,505; 8,359,989; & 8,776,703; 9,399,832 & 9,410,276; 10,081,897; Japanese Patent Nos. JP 5389467; JP 5622876; JP 5745724; European Pat. Nos. EP 2 100 994 (6 countries) & EP 2 321 454 (3 countries); Turkish Patent No. TR 2011 06842 T4; German Patent No. DE 60 2009 001 409 9; Chinese Pat. Nos. ZL 2009 10130717.7; ZL 2009 80134191.8 & ZL 2012 10371253.0; & Other U.S. & Foreign Patents Pending **2:** Covered by U.S. Patents 6,283,053; 6,807,917; 7,096,806; EP 2 220 278, 7,905,187 & by other U.S. and foreign patent(s) pending

A high-angle, close-up photograph of a luxury car's interior. The focus is on the driver's side, showing the steering wheel, dashboard, center console, and front passenger seat. The interior is finished with light beige leather and dark wood trim. The center console features a gear shifter and handbrake. The dashboard and door panels have circular air vents and decorative elements. The overall aesthetic is one of elegance and high-end craftsmanship.

AUTOMOTIVE MARKET

CMC machines not only make the carpet you walk on, they also produce the carpet in your vehicle. This market requires precision plus speed, and our High Speed Cut Pile machines - built with the world's most desirable gauge parts - allow you to meet the demands of your automotive customers and out-perform your competitors



Creating Possibilities...

Your success is our passion.

-Charles Monroe, CEO



SUPPORT AND CUSTOMER CARE

Personal attention is part of the CMC difference. Our Customer Care team of dedicated professionals has the experience and resources to help you get the parts you want, when you want them. Our goal in serving you is "one-call resolution of your problem" and "one-day shipment of your parts order."

Not sure what part you need? Call us at **1.423.842.3312** or toll free at **1.800.262.8327** and we will help you determine the right part. Our service technicians can also help you diagnose any problem and install the required parts as well.



INTELLIGENT DESIGN

UNCOMPROMISING QUALITY

When you manufacture over 10,000 parts each month, you better be good at it. CMC does not leave quality to chance. We utilize the latest inspection technology and instruments to measure and check our work, but we do not rely on testing alone. Instead, we focus on building the quality into every part as it is made. The engineering software we use to design the part also drives the program used to manufacture it, eliminating the chance of error.

OUR QUALITY POLICY

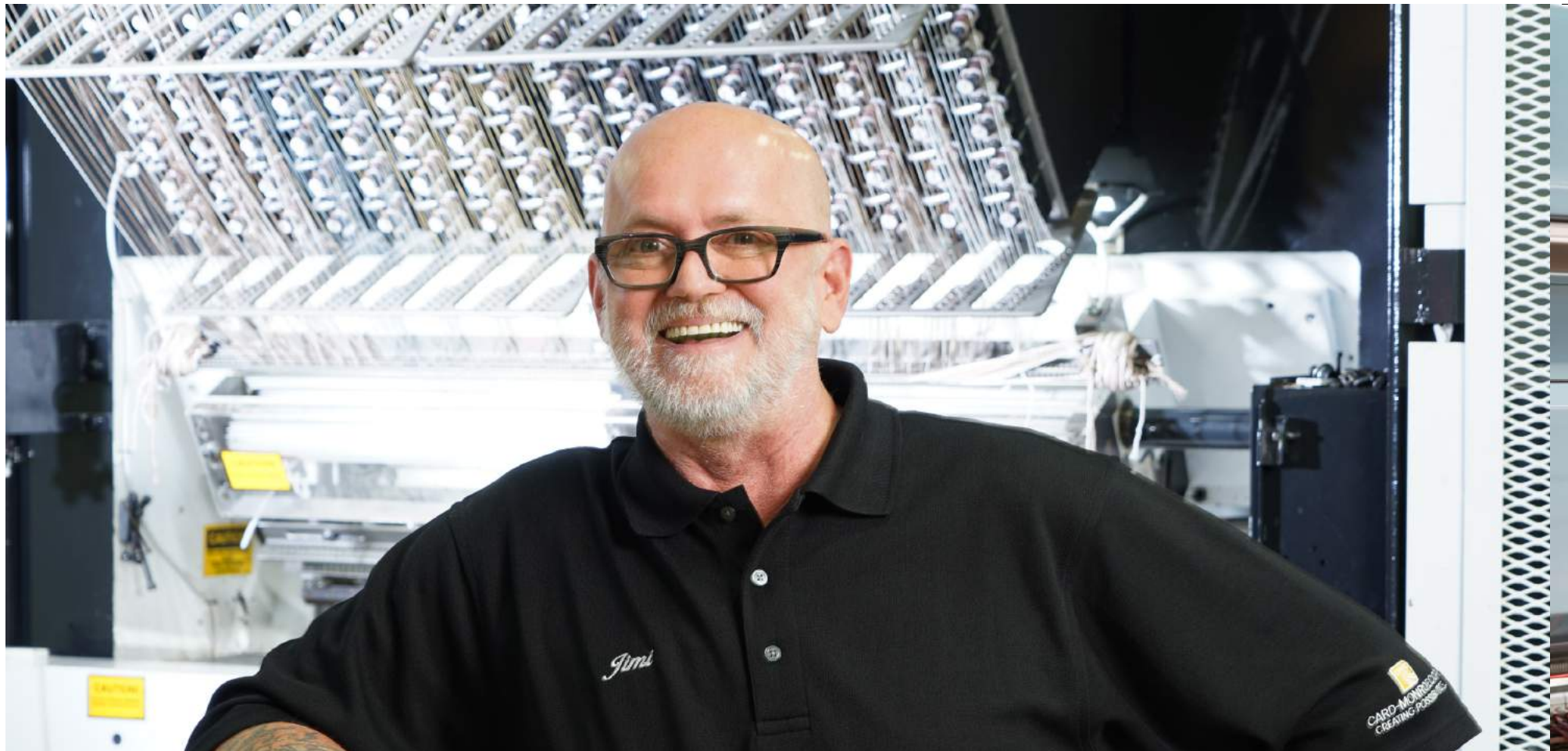
We will continually learn and understand our internal and external customer requirements, and will provide defect-free products and services on time, every time.

CONTINUOUS IMPROVEMENT

CMC has always had the reputation for building the best tufting machines in the industry, but we know you can't rely on past success. That's why we are so intent on listening to you for feedback and for an honest assessment of our performance. We also audit internally to learn where opportunities hide.

ON-TIME DELIVERY

As the Original Equipment Manufacturer, CMC has complete knowledge of your tufting investment. We even support machines we made 30 years ago; there is no end-of-life cut off on our machines. Our inventory of service parts and our capability to produce or acquire what you need, help keep your CMC tufting machines in top condition.



WORRY-FREE SERVICE

With direct access to original designs and drawings, CMC has complete knowledge of your tufting investment. When you combine our knowledge and history with the latest technologies in manufacturing, service, and engineering, the CMC Customer Care/Service Team is the only genuine OEM source for CMC brand parts and services.



ON-SITE TECHNICAL ASSISTANCE

CMC Field Service Representatives are available to provide technical assistance at your site for problem diagnosis and resolution, as well as accurate determination of replacement parts and maintenance needs. You can have complete confidence in our team to keep your machines in production.

TUFTING UNIVERSITY



With over 1,200 graduates, Tufting-U is dedicated to enhancing the skills and capabilities of all levels of tufting industry employees. Students include everyone from managers, operators, and technicians, to engineers and designers. Tufting University is the only training center in the industry where you can learn best practices for setting-up, maintaining and operating your tufting machines, and explore how CMC machines are designed and manufactured.

The Purpose of Tufting University is to advance the success of our customers by sharing technical knowledge and insights into the art and science of tufting.

The Mission of Tufting University is to prepare industry employees for success by raising their level of tufting competency through a learning environment where personal growth and skill development are continuously satisfied in the course of an ever advancing curriculum.

Our Vision is to become increasingly indispensable to you, our customers, by providing exceptional technical training essential to improving your operating efficiency through more effective application and utilization of your tufting equipment.





UNIQUE IN THE INDUSTRY

Tufting-U is the only training center in the industry with a full-time Technical Training Manager exclusively dedicated to advancing the knowledge and skills of people who work on and with tufting machines, along with our complete demo and sampling capability, a fully equipped classroom, and a hands-on Learning Lab with two cut-away machines.

HANDS-ON FACTORY TRAINING

Our typical three-day class has up to six students who come from the same plant. Tufting-U is located inside our main plant and corporate headquarters in Chattanooga. Each class is dedicated to a single customer so that training is specific to your needs. We collaborate with each company to ensure your students receive the training that is right for them.

The learning methodology includes:

- Interactive Classroom Presentation & Discussions
- Workbook Lessons and Exercises
- Hands-on Learning Lab
- Individual Computers to Stimulate Production
- Observation of Tufting Machine Construction
- Plant Tour and Lean Manufacturing

WHAT STUDENTS ARE SAYING...

- *This is the most worthwhile course I have taken in my 25 years in manufacturing.*
- *I wish this was required for all managers, supervisors, and mechanics in my company.*
- *It was very beneficial to actually handle and operate the cut-away training machines.*
- *Learned more this week than in the last year on the floor.*
- *Best training I have ever attended - I needed this two years ago.*

TWO COURSES:

1 THE TUFTING MACHINE - In this course students learn to recognize the machine orientations, differentiate between machine configurations, understand basic mechanical functions, identify key components and associate them to carpet variations, and recognize and follow best practices for operating and maintaining the tufting machine.

2 CONCEPT TO CARPET - Understanding and navigating Command Performance G.2 and applying the most essential functions of the machine operating system are the backbone of this course.



CREATIVE TUFTING CENTER

One of the most significant ways we serve our customers is through the Creative Tufting Center (CTC) where carpet designers from across the globe come to transform imagination into reality. In the CTC you will find a complete range of CMC tufting machines in a clean, air conditioned, well-lit environment. The CTC includes a number of private enclaves that offer creative settings for your designers to work.

Our in-house designers and application specialists collaborate with and assist you as you dream, create, and produce new looks, styles, and product samples for your markets. At the CTC you can experiment with a multitude of design options; varying patterns, colors, yarns, pile heights and stitch arrangements. It's the perfect opportunity for carpet designers to see their art come to life through the science of CMC ingenuity.

cmc CARD-MONROE CORP.
CREATING POSSIBILITIES...



CARD-MONROE CORP.

**CREATING
POSSIBILITIES...**



CARD-MONROE CORP.
CREATING POSSIBILITIES...

4841 ADAMS RD. CHATTANOOGA, TN
37343 USA

(423) 842-3312 • WWW.CARDMONROE.COM • TOLL FREE: (800) 262-8327