



# ALLFIT

Medium Batch Dyeing Machine



# ALLFIT

Medium Batch Dyeing Machine

*ALLFIT is designed for medium batches and available in different machine sizes. The liquor ratio and fabric circulation time are similar to that of the production machine, such that the recipe developed on it can be adopted directly. At present there are more than 2000 ALLFITs running in dyehouses around the globe.*



## 6 Advantages

### 1. High Reproducibility

Accurately reproduce dyeing results.

### 2. High Automation

Advanced process control and automation applicable to production.

### 3. Compatible for Production

Similar Liquor ratio and cycle time as on production equipment.

### 4. Designed for Medium Batches

Suitable for medium batches; save production cost and environmental friendly.

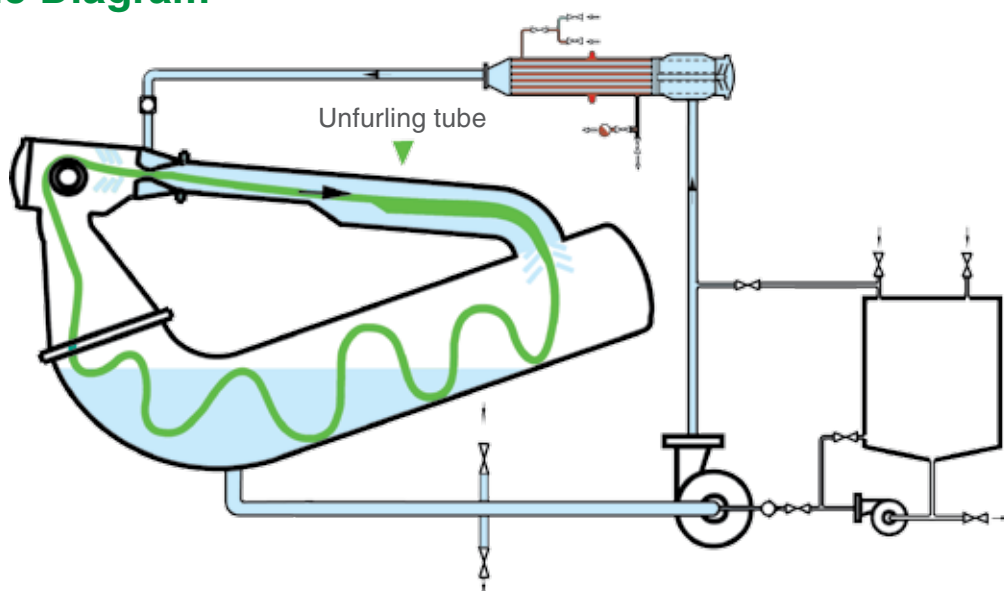
### 5. Plug & Run

The installation of the machine is easy and simple.

### 6. Development of Dye Recipe

Recipe developed can be directly applied to production.

## Schematic Diagram



## ALLFIT Medium Batch Dyeing Machine

Model	No. of Chambers	Capacity (kg)	Dimension (mm)		
			L	W	H
ALLFIT-1	1T	1 - 2	1100	1050	1780
ALLFIT-5	1T	4 - 6	1400	1400	2000
ALLFIT-10	1T	8 - 12	2100	1400	2250
ALLFIT-30	1T	20 - 30	4350	1280	2650
	2T	40 - 60	4350	2080	2650
ALLFIT-60	1T	40 - 60	4500	1400	2650
	2T	80 - 120	4500	2300	2650
ALLFIT-120	1T	80 - 120	4800	1450	2800
	2T	160 - 240	4800	2450	2800



### Technical Data



Design temperature :	140°C
Design pressure :	3.5bar
Liquor ratio :	down to 1:4.5
Lifter reel speed :	7 ~ 200m/min (applicable to specific model only)
Heating gradient :	25°C ~ 100°C approx. 5°C/min 100°C ~ 130°C approx. 2.5°C/min (dry saturated steam pressure at 7bar)
Cooling gradient :	130°C ~ 100°C approx. 3°C/min 100°C ~ 80°C approx. 2°C/min (cooling water at 3bar, 25°C)

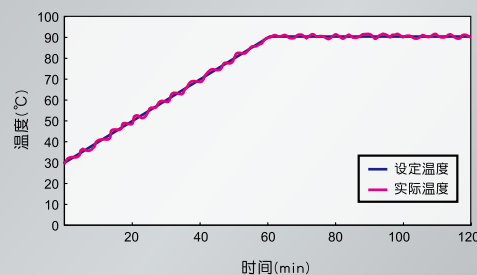
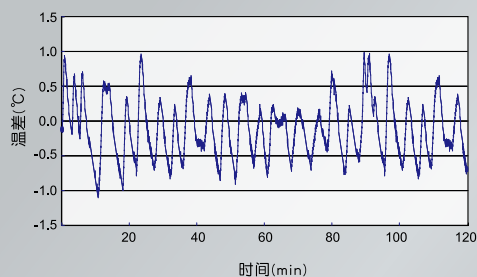
## FC30 Series Program Controller

### For The Most Dyehouse Network Advanced Control System

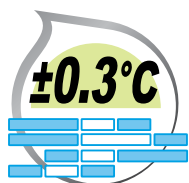
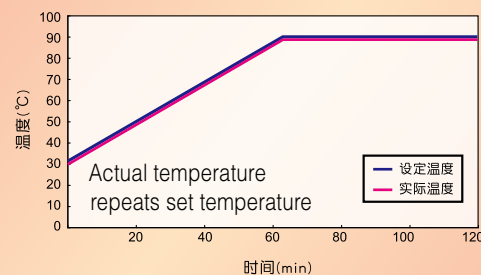
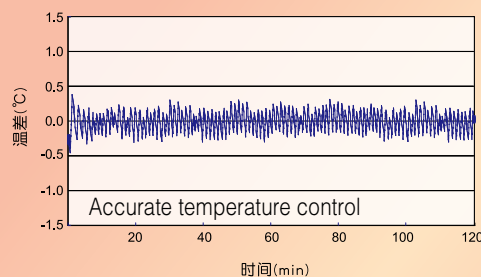
New generation of FC30 program controller has a 6.5-inch 640x480-pixel, TFT color LCD display together with novel control functions, provides the most cost-effective dye cycle control. FC30 can also integrate with our **Viewtex** and THEN-TDS central computer system, providing comprehensive control management.



#### Conventional PI Control Temp $\pm 1^{\circ}\text{C}$



#### Fuzzy Control Temp $\pm 0.3^{\circ}\text{C}$



#### Fuzzy Logic Temperature Control

Unique Fuzzy Logic Temperature Control technology, temperature control can be confined down to  $\pm 0.3^{\circ}\text{C}$ .



#### Fong's National Engineering Co., Ltd.

8/F., 22-28 Cheung Tat Road,  
Tsing Yi, Hong Kong, PRC  
Tel: + 852 2497 3300  
Fax: + 852 2432 2552  
E-mail: enquiry@fongs.com  
Website: www.fongs.com

##### Sales Enquiry

Tel: + 86 755 8473 6288 Ext. 183  
Fax: + 86 755 8473 6808  
E-mail: enquiry@fongs.com

##### Technical Services

Tel: + 86 755 8473 6288 Ext. 234  
Fax: + 86 755 8473 7972  
E-mail: service-os@fongs.com

#### Fong's National Engineering (Shenzhen) Co., Ltd.

17-19, Lixin Road, Danzhotou Industrial Zone,  
Nanwan Sub-District, Longgang District,  
Shenzhen, Guangdong, PRC  
Postal Code: 518114  
Tel: + 86 755 8473 6288  
Fax: + 86 755 8473 6154

##### Logistics

Tel: + 86 755 8473 6288 Ext. 399  
Fax: + 86 755 8473 6808  
E-mail: shipping@fongs.com

##### Parts

Tel: + 86 755 8473 6288 Ext. 169  
Fax: + 86 755 8473 6691  
E-mail: spareparts@fongs.com

#### FONG'S EUROPE GMBH

Milchgrundstrasse 32,  
74523 Schwäbisch Hall, Germany  
Tel: + 49 791 403 0  
Fax: + 49 791 403 166  
E-mail: info@fongs.eu  
Website: www.fongs.eu