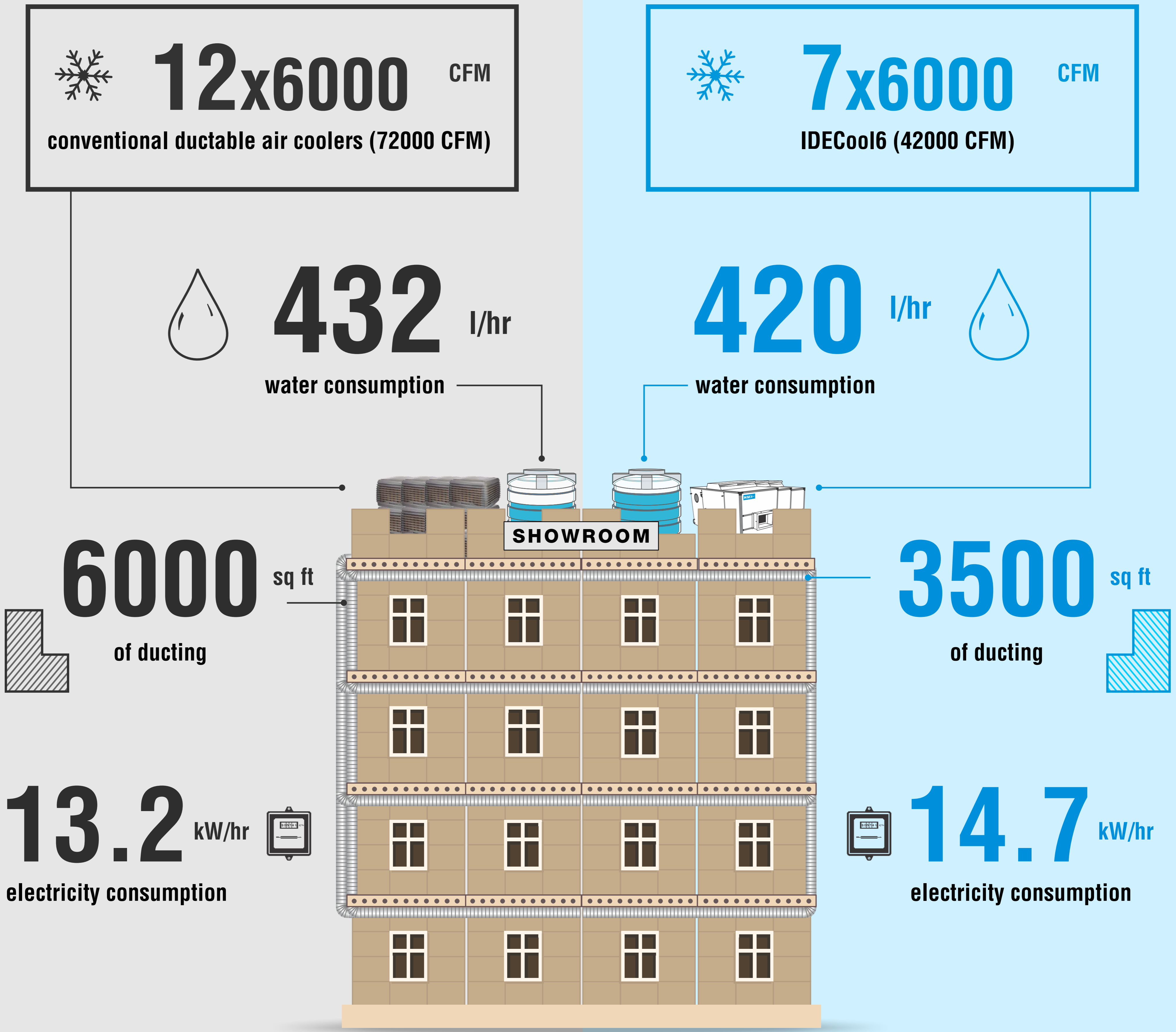


Save as you cool

A landmark garment showroom at Nanded, Maharashtra, wanted to cool its 7500 sq ft showroom in a cost effective way. It considered conventional (single stage) evaporative coolers and HMX's indirect direct evaporative coolers – IDECool. In the end, the choice was clear – IDECool. Here's why.

Conventional evaporative coolers

IDECool



Result

₹ 30 lakhs Capex

₹ 25 lakhs Capex

28°C Summer / 32°C Monsoon indoor temperature

25°C Summer / 30°C Monsoon indoor temperature

7 grams moisture added per kg of air

3 grams moisture added per kg of air